

Seville Airport to Ronda (1 hr : 40 min)

Ronda to Jubrique – (1 hr : 10 min) Total 2 hr : 50 min

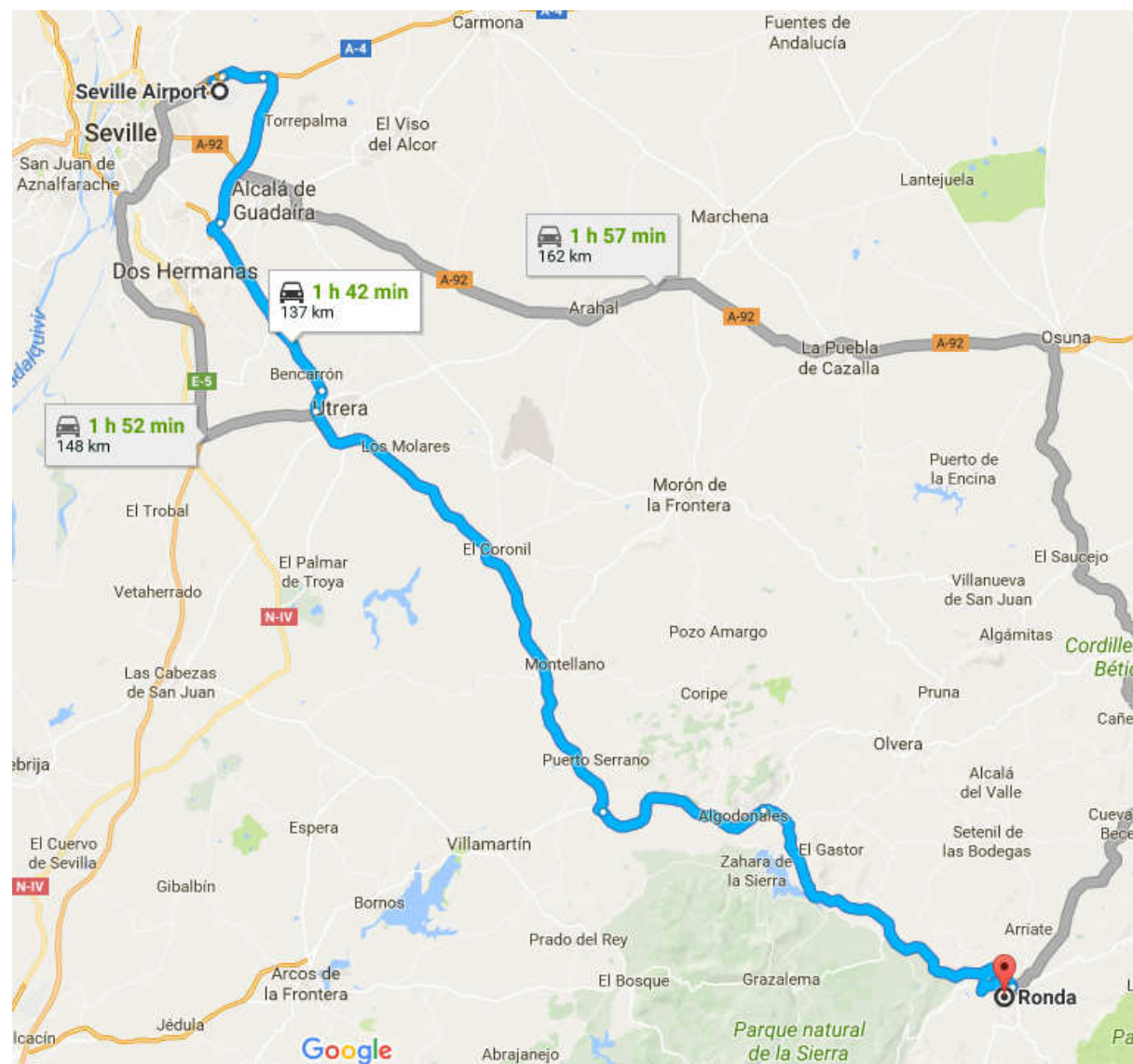
STEP 1. SEVILLE TO RONDA

Take the A4 East, direction CARMONA,

Exit 526 change to SE-40 Southbound until Exit 13

Take A 376 South East for UTRERA – RONDA

*If you're leaving from Seville Centre - Take **A 376** South East for UTRERA – RONDA or, from the ring road **A-4 Exit 6B Eastbound, or 6A Westbound***

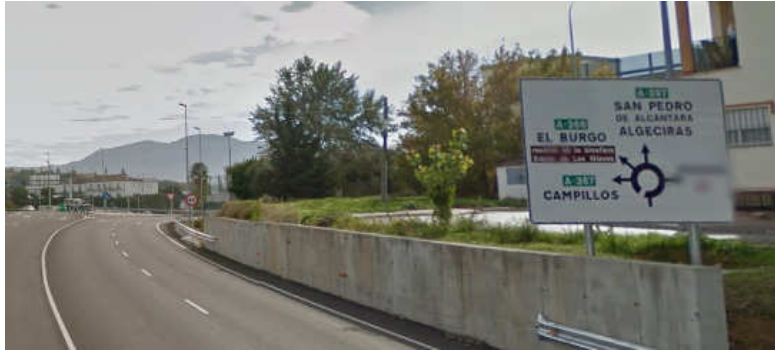


STEP 2. RONDA TO JUBRIQUE VIA BYPASS

*If you're visiting Ronda now, go to **STEP 3**. For Parking and Supermarket*

Going directly Stay on the **A374** Bypass and continue to JUBRIQUE.

Follow directions for **A397 SAN PEDRO & ALGECERIAS**



Continue on bypass until Exit for **HOSPITAL - RONDA Sur - ALGECIRAS**



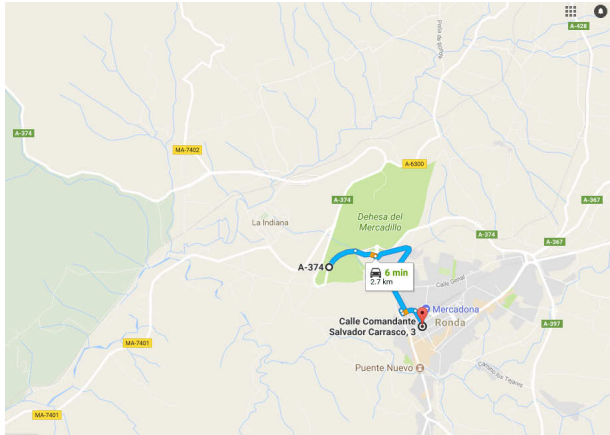
At the Roundabout with the Arches, stay in right lane, and take the second Exit (straight through) for **A-369 ALGECIRAS** (roadworks finished)



NOW Go to **STEP 4**.

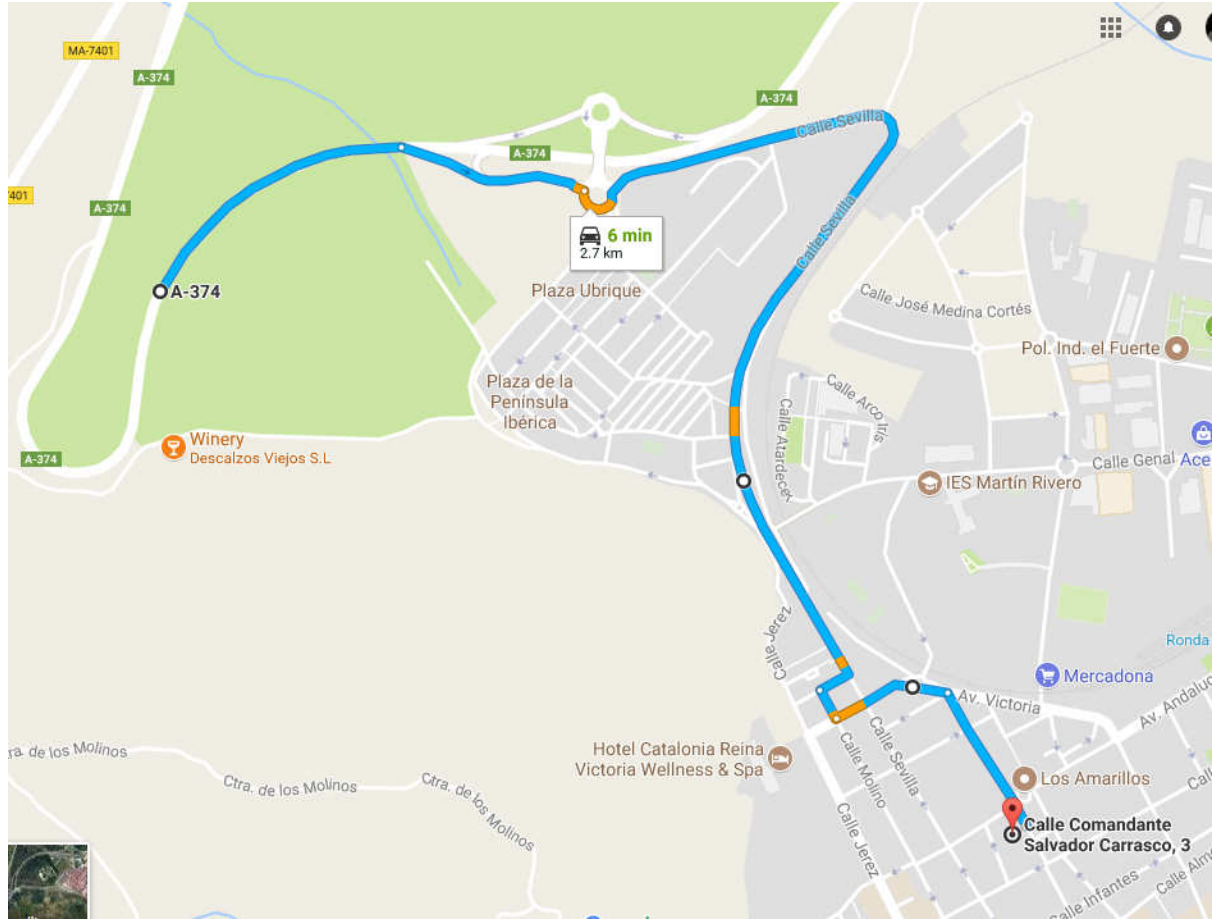
STEP 3. Directions for Parking, Supermarket and Ronda Centre

Coming into RONDA on the A-374 from SEVILLE - Exit @ KM 31 – RONDA norte



Take the first exit for **Ronda norte**, and follow these directions to the “**Parking Azul**” (Blue Parking)
Off the highway, straight through roundabout, on **Calle Sevilla** go past municipal recycling, around steep curve, continue past Petrol Filling Station and Pharmacy, under footbridge.
Two lanes, stay in the left lane to go straight on (right lane turns left).
At Michelin Tyre Garage, **take right** (one-way system) and then **two left turns**.
Continue straight on Avenida Victoria, past the Hotel Sevilla, and turn right onto **Calle Comandante Salvador Corrasco**. Continue onto the next roundabout (bus station) and you will see the entrance

to the car park on the right.



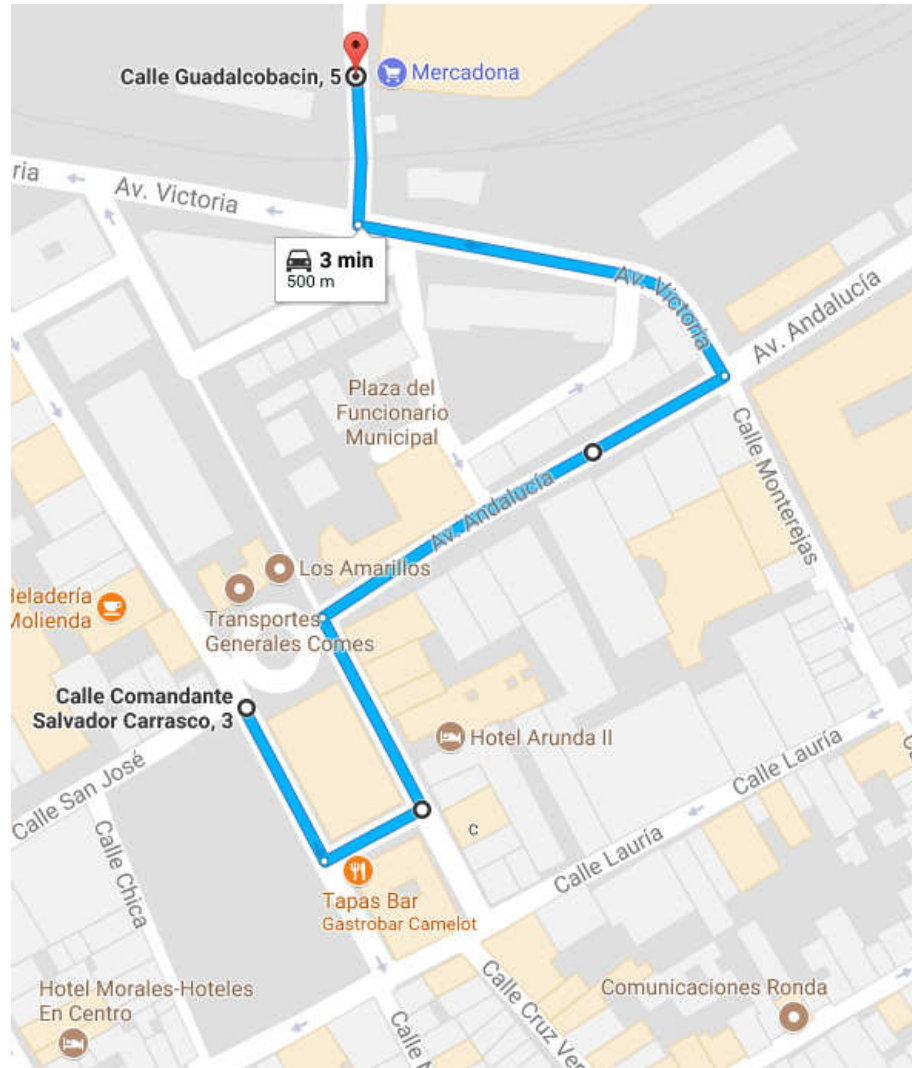
Parking Azul is a public car park, and you pay by meter. You are only charged for business hours, so lunch time and night time is free and is calculated by the machine, hours are posted on the entrance.



It's a central spot to visit the shopping streets and especially the “**Old Town**” and “**New Bridge**” To sight see, exit the carpark at the opposite end (straight down as in photo), and continue on **Calle Comandante Salvador Carrasco** and **Calle Naranja & Calle Calvo Asencio** (100M in total) until you come to the main pedestrian street **Carrere Espinal** (known as Calle la bola).

Turn left, and walk to the end, across the road, and into the Plaza de Torros (Bull ring) on the left, past the restaurants is the Tourist Office, collect all the free maps and booklets on **Ronda** and the **Serrinia de Ronda** that you can get your hands on.

Exit the Parking and let's go to Mercadona Supermarket.



Exit where you came in, and immediately turn right (one-way).

(Most people exit straight onto the Bus Station roundabout, but best to do it legally)

The view above is the top entrance/exit, the photo is from the roundabout with the bus station behind the camera.

Exit facing the roundabout, but do a **right turn**, and then **two left turns**, which brings you back to the same roundabout, but using the correct one-way system.

Take a **right turn** from the roundabout, and continue on **Av Andalucía** up to the next pedestrian crossing, keeping in left lane, **turn left**.

on **Av. Victoria**, change to the **right lane** after the bend, and take the **first turn right** over the railway level crossing. **Mercadona Supermarket** is on your right, enter into the underground parking (enter on the left side lane).

Over the railway, you can see the **P** signs for the under ground carpark.



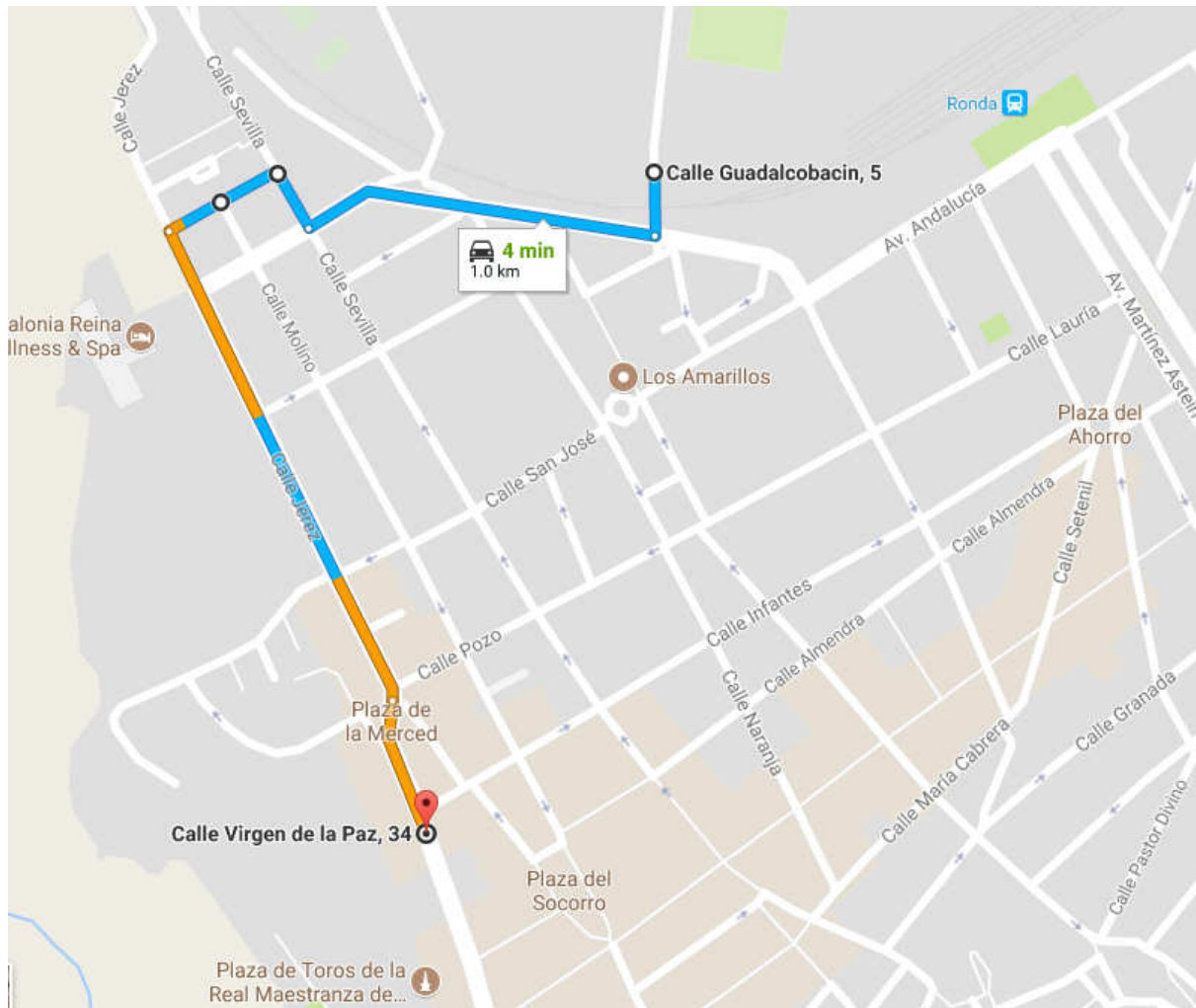
When you enter, hold onto your parking ticket, as it will be nullified at the checkout.
1 euro or 50 cent required for trollies (plenty upstairs)

When finished, at the checkout you can buy heavy duty re-useable shopping bags, or ask for light weight plastic bags (bolsas de plastico), if you haven't picked out the former, they will ask you how many plastic bags you would like.

Remember to give them the parking ticket before you pay.

Leaving Mercodona and Ronda

Note: if you're using GPS put in **Jubrique Malaga 29492** and not **Ubrique** (which is in Cadiz province)

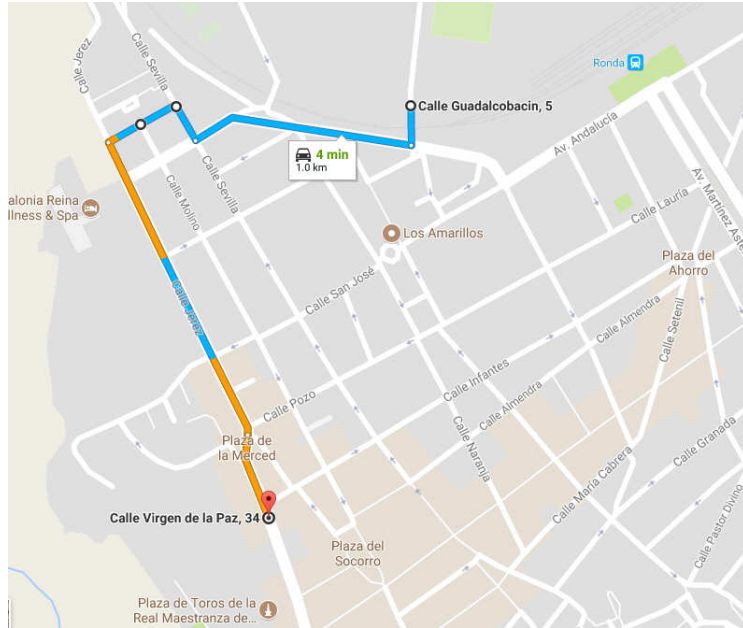


Exit the carpark ramp (on the left side lane), and (carefully) **turn left** over the railway, and take **next turn right** onto **Avenida Victoria**, and continue on straight.

You have to turn right onto **Calle Sevilla**, and this time **keep left** and **turn left** at the Michelin Garage, **straight** to the **end** and **turn left** onto **Calle Jerez**.

*You will see the Hotel Victoria on your left, an impressive building and gardens, was a hot spot for the British Officers from the Garrison based in Gibraltar, who got their soldiers to build a railway from Algeciras to Ronda just for the hell of it! Go in and have a look around, there is also the bedroom (preserved in time) of the poet **Rilke** who used to stay there.*

Follow the on **CI Jerez** towards the Bull Ring “**Plaza de Toros**” (The oldest one in Spain)



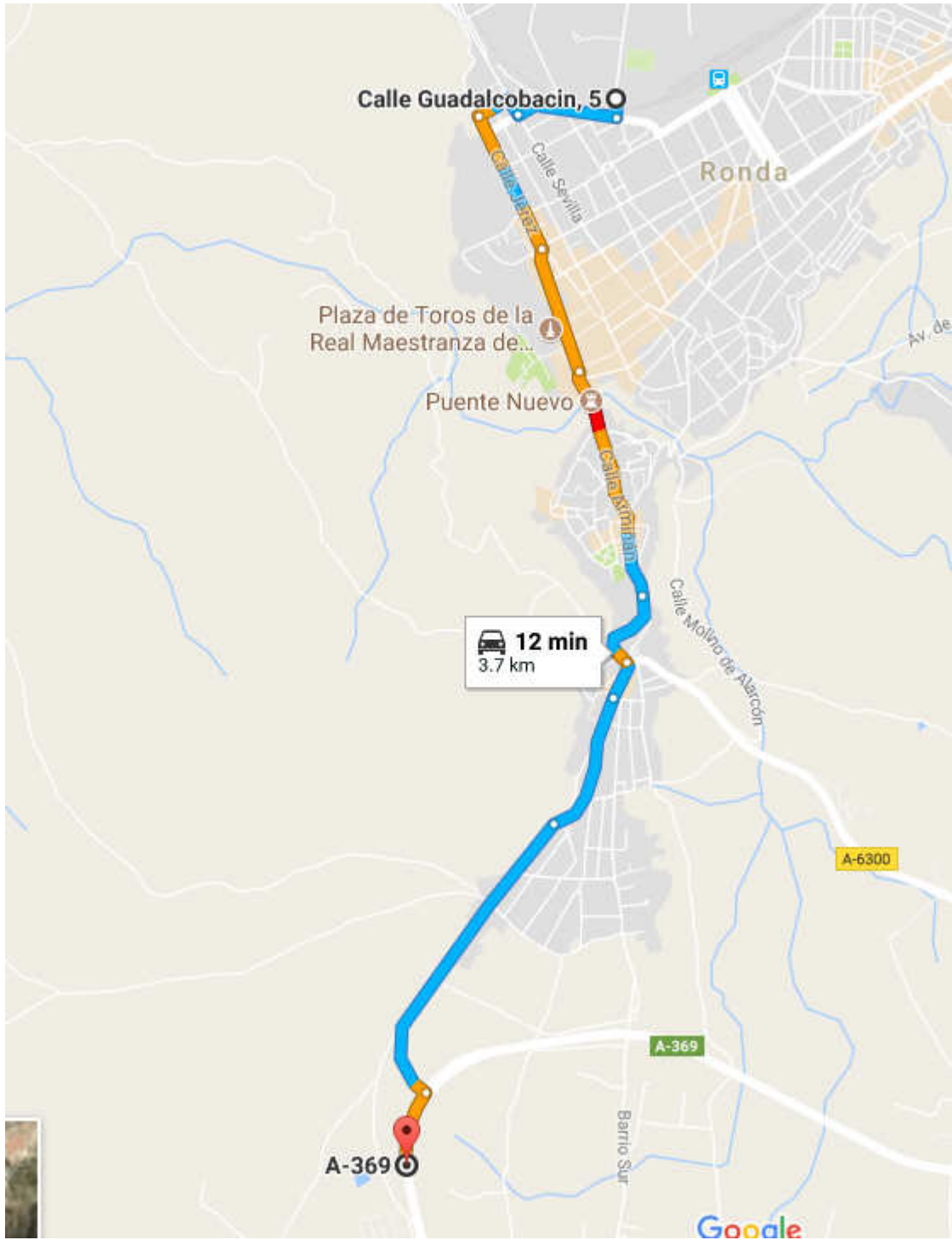
Continue on past the “Bull Ring”, over the” New Bridge” (the old one fell down) through the old town, and down past the French barracks into the “Barrio de San Francisco” (Old Town with fortified Walls)

At the roundabout, take the first exit right, and continue for about 2km until you reach the **A-369** direction **Algeciras**, turn right. (as map below)

As you go towards the Barrio San Francisco through the old town, watch out for this signpost. It's a narrow stretch, where you Yield right of way to oncoming traffic



There's another one as you leave the Barrio San Francisco, towards Camping Sur



Some Photos or visit:

<https://www.google.com/maps/place/29400+Ronda,+M%C3%A1laga,+Spain/@36.740668,-5.1756688,14z/data=!3m1!4b1!4m5!3m4!1s0xd0d3143e258a279:0x94358021349a5ba2!8m2!3d36.746209!4d-5.1612251>



Bull Ring



New Bridge



New Bridge (a must see over the side)



Old Town (Plaza and streets to the right worth a visit)



Barrio San Francisco (great Tapas)



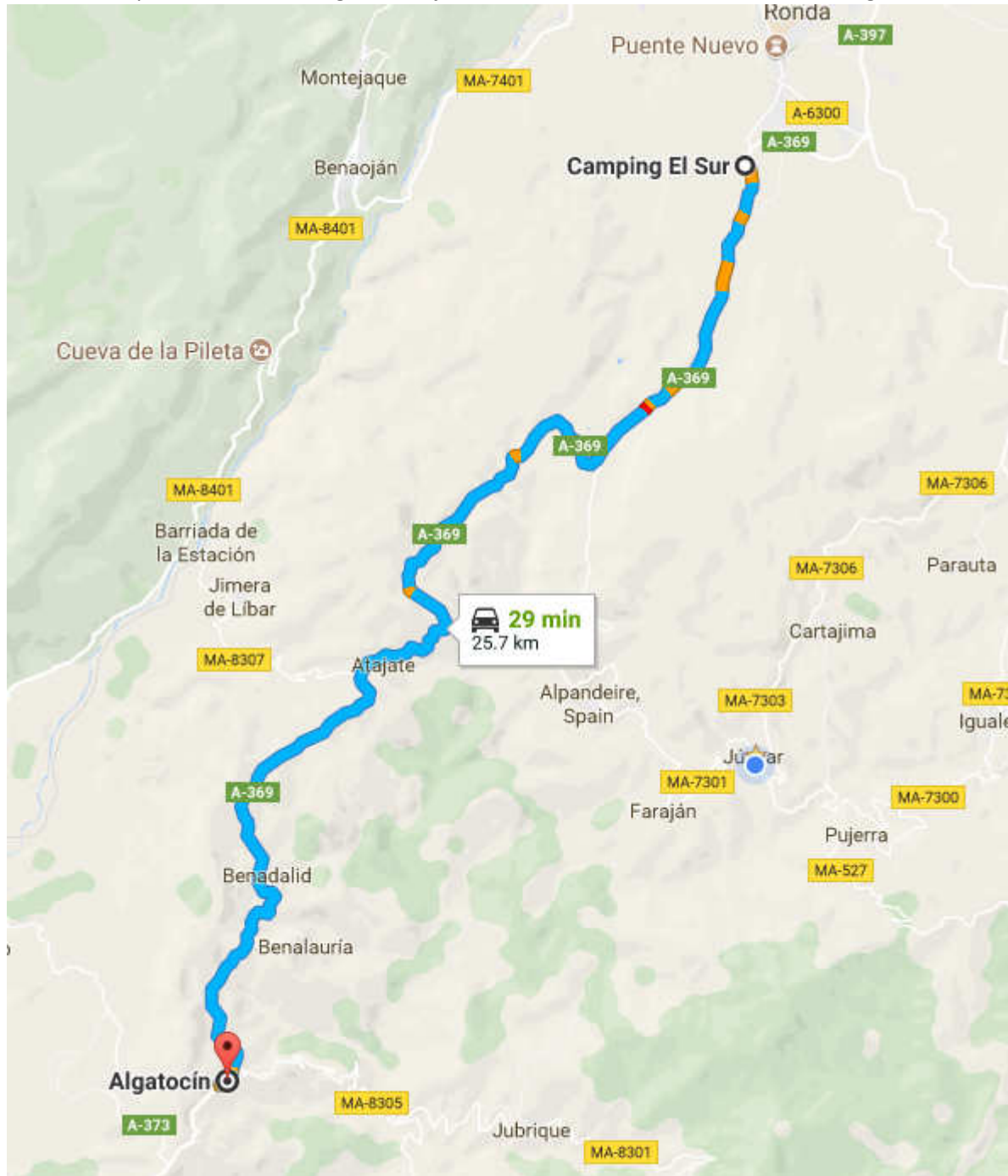
Barrio San Francisco (Take road to the right)

STEP 4. RONDA to JUBRIQUE

Ok were now on the **A-369** going South West.

It's a mountain road, and you will have exited near the **Camping El Sur**.

Continue on past the White Villages of Atajate, Benaldalid, Benaluria, and arrive at Algotocin.



When you enter **Algotocin** there is a country supermarket “Super Genal” on your right, with the most interesting selection, including great wines, fruit & veg, plants & trees, pots & pans, you name it they’ve got it.

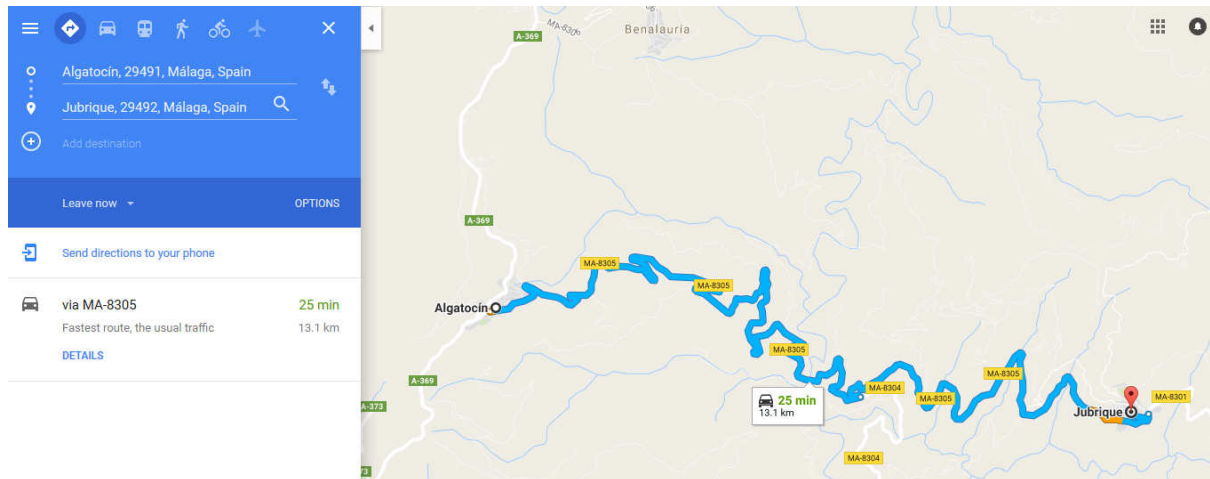


Supermarket

Continue on until the next major junction, marked **Estepona, Jubrique and Genalguacil** (below)



Algotocin to Jubrique MA-8305



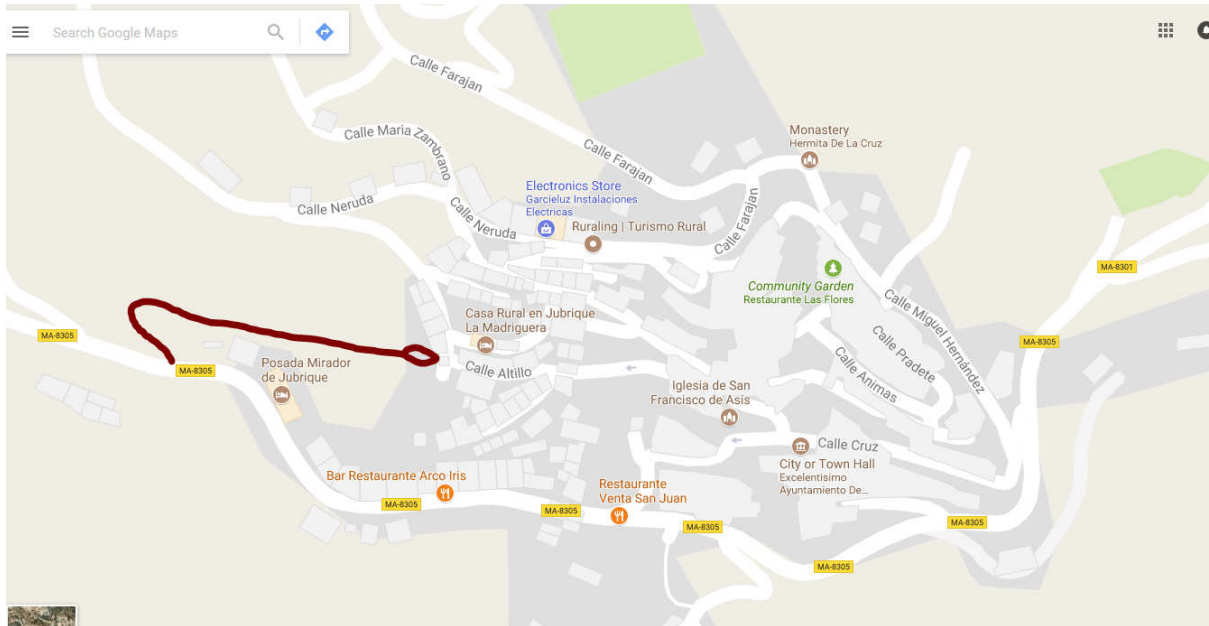
Looks like a Richter scale, it's a bit twisty and downhill!

Continue on down to the river at the **Venta San Juan** (Restaurant & Bar) and up to the next junction, which is **Jubrique** or **Genalguacil**, keep **LEFT**.

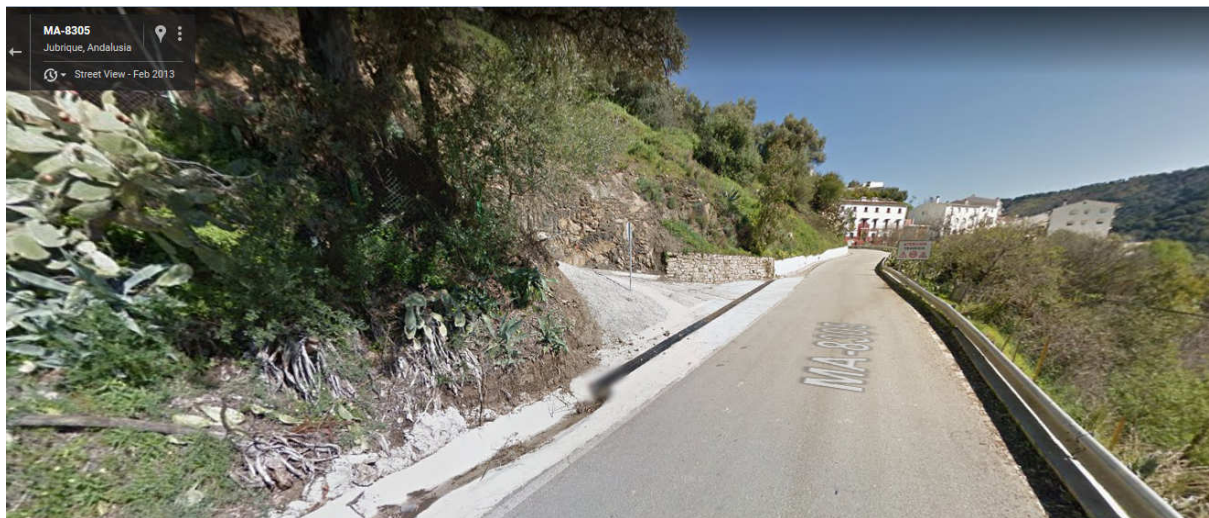


Entering **JUBRIQUE**

You are entering from the left-hand side, just before the first buildings and Hotel, there's a left turn. The red line marks the track into "Cortijo Retarta"



View as you enter Jubrique, there's a road sign with **40** and **TRAVESIA**

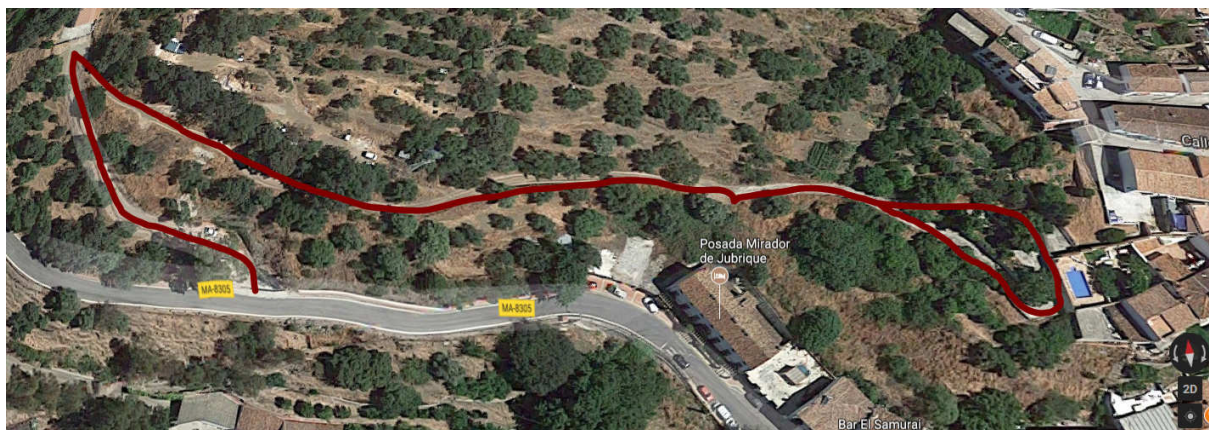


It's a sharp turn left, if you prefer, continue on 100 to the hotel (or bar beside) have a coffee and call Antonita.

View from opposite direction towards Algotocin.



Continue on up the track, and you will come to a house on a bend, go round the bend, and continue on (above the back of the Hotel) and when it splits in two, take the left side, and drive up to the back entrance of the house.



(East) Algotocin left, Jubrique right (West)

Redline is the track. You can see the pool of Retarta on the right.

